

**HORSEWALKER**

**BELMONDO® Horsewalker P**

**Electrically conductive  
Improved wet slip-resistance  
With UV and ozone protection**

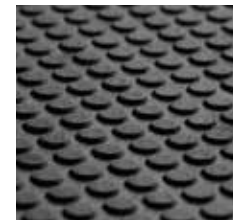
- suitable for every horsewalker
- requirement: hard/paved floor (concrete, asphalt, ...)
- tailor-made production
- protects the musculoskeletal system
- weatherproof and frostproof
- very durable with every type of shoe



**Surface:** rhombic profile with wear resistant top coat  
**Lower side:** studs (2 mm)  
**Material:** rubber  
**Thickness:** 19 mm  
**Dimensions:** individually tailor-made



**rhombic profile with top coat**



**studs on lower side**



**Laying:** according to BELMONDO® laying instructions

**Tolerances:** thickness: +3/-2 mm  
length/width: +/- 1.5 % (DIN ISO 3302-1 tolerance class M4)  
The tolerances also apply within the mat.

The products presented here should only be used for the listed applications. Technical specifications are subject to alterations. All sales are subject to our General Terms and Conditions. Legal basis is the German version of the document.