



**LOOSEBOX / LYING AREA**

**BELMONDO® Classic**

**For higher stress areas – also for pins and studs**

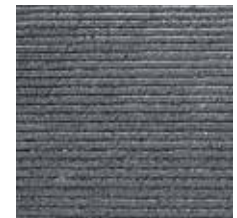
- enhanced slip resistance due to appropriate softness and elasticity
- heat insulation and noise reduction
- gentle on hooves and joints
- protects against injuries
- material impermeable to water and resistant to urine
- suitable for vehicle traffic\*
- minimizes the amount of bedding, costs and labour



|                             |  |
|-----------------------------|--|
| <b>Surface:</b>             | horseshoe profile with wear resistant top coat |
| <b>Lower side:</b>          | grooves  |
| <b>Material:</b>            | rubber   |
| <b>Thickness:</b>           | 18 mm  |
| <b>Dimensions:</b>          | 1 m x 1 m                                      |
| <b>Weight:</b>              | approx. 21 kg                                  |
| <b>Puzzle shaped edges:</b> | on 4 sides                                     |



**horseshoe profile with top coat**



**groove profile on lower side**

Special dimensions are generally available on request. All BELMONDO® products are suitable for looseboxes as well as open stables.

To bind fluids (urine) a small amount of absorbent bedding is always required in the loosebox. We also recommend a minimal amount of bedding in the open stable.



\* can be driven on with standard equipment such as farm yard loader or tractor with authorized pneumatic tyres at the recommended inflation pressure up to max. 4 bar. (Notice: drive with due care and steer in large radius!)

**Laying:** according to BELMONDO® laying instructions

**Tolerances:** thickness: +3/-2 mm  
length/width: +/- 1.5 % (DIN ISO 3302-1 tolerance class M4)  
The tolerances also apply within the mat.

The products presented here should only be used for the listed applications. Technical specifications are subject to alterations. All sales are subject to our General Terms and Conditions. Legal basis is the German version of the document.