

LOOSEBOX / LYING AREA

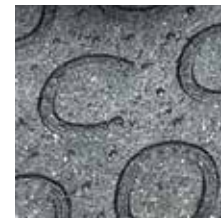
BELMONDO® Basic

**Good basic comfort
for lower stress areas**

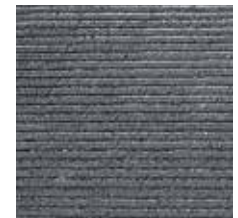
- for shoes without pins or studs
- enhanced slip resistance
- heat insulating
- protects hooves and joints
- less noise and less dust exposure contribute to a healthier climate in the stable
- less costs due to less bedding requirements
- suitable for vehicle traffic*
- material impermeable to water and resistant to urine



Surface: horseshoe profile
Lower side: grooves
Material: rubber
Thickness: 18 mm
Dimensions: 1 m x 1 m
Weight: approx. 20 kg
Puzzle shaped edges: on 4 sides



horseshoe profile



groove profile on lower side

Special dimensions are generally available on request. All BELMONDO® products are suitable for looseboxes as well as open stables.

To bind fluids (urine) a small amount of absorbent bedding is always required in the loosebox. We also recommend a minimal amount of bedding in the open stable.



* can be driven on with standard equipment such as farm yard loader or tractor with authorized pneumatic tyres at the recommended inflation pressure up to max. 4 bar. (Notice: drive with due care and steer in large radius!)

Laying: according to BELMONDO® laying instructions

Tolerances: thickness: +3/-2 mm
length/width: +/- 1.5 % (DIN ISO 3302-1 tolerance class M4)
The tolerances also apply within the mat.

The products presented here should only be used for the listed applications. Technical specifications are subject to alterations. All sales are subject to our General Terms and Conditions. Legal basis is the German version of the document.